

Operation Manual of High-Speed Scanner

Instruction

Catalog

I. Product Installation Guidelines	2
1.1 Getting Images	2
1.2 Software Installation	2
II. Software Instructions	6
2.1 Acquisition of images	6
2.2 Image Cutting	10
2.3 Video Recording Function	11
2.4 Multiple equipment and operation	13
2.5 Image Save Settings	15
2.6 Parameter Settings	16
2.7 Document Merging and Printing Function	19
III. Common Problems and Solutions	21

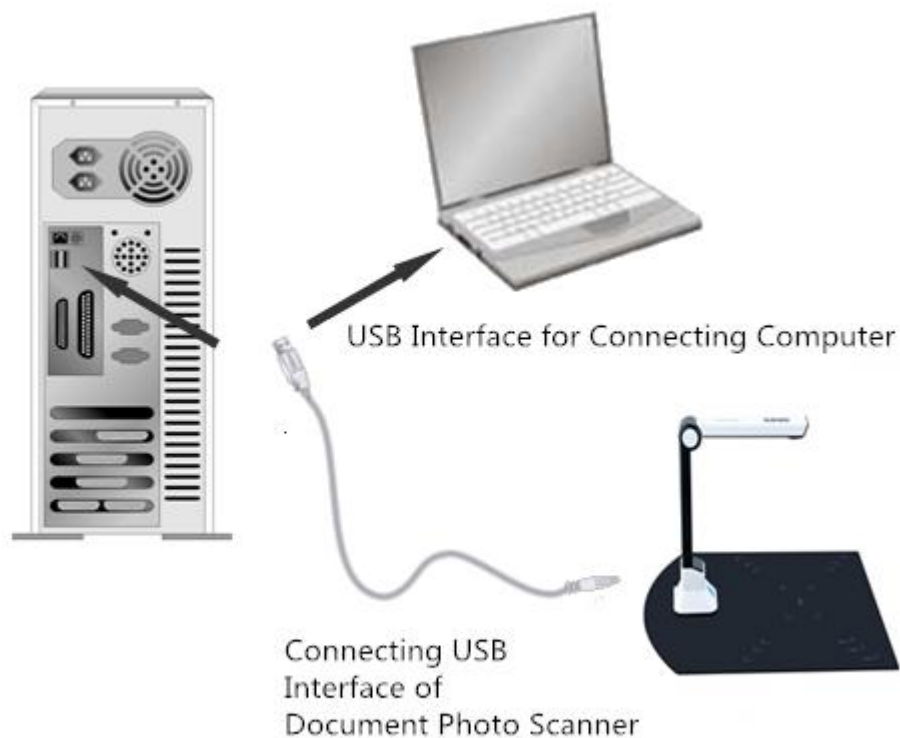
I. Product Installation Guidelines

1.1 Hardware Connection

This product is connected with computer by Universal Serial Bus Port (USB).

AUSB data line is offered as one of the random accessories. Users need to start the computer, and connect one end of the USB data line to the USB port of the camera product and the other end to the PC USB port. When connected, the system will automatically identify new hardware devices. Notes: Make sure that the PC USB port shall be used properly and is at least the USB2.0 port; otherwise the device may not be used properly.

If users can't find any PC USB port, please refer to the PC manual.



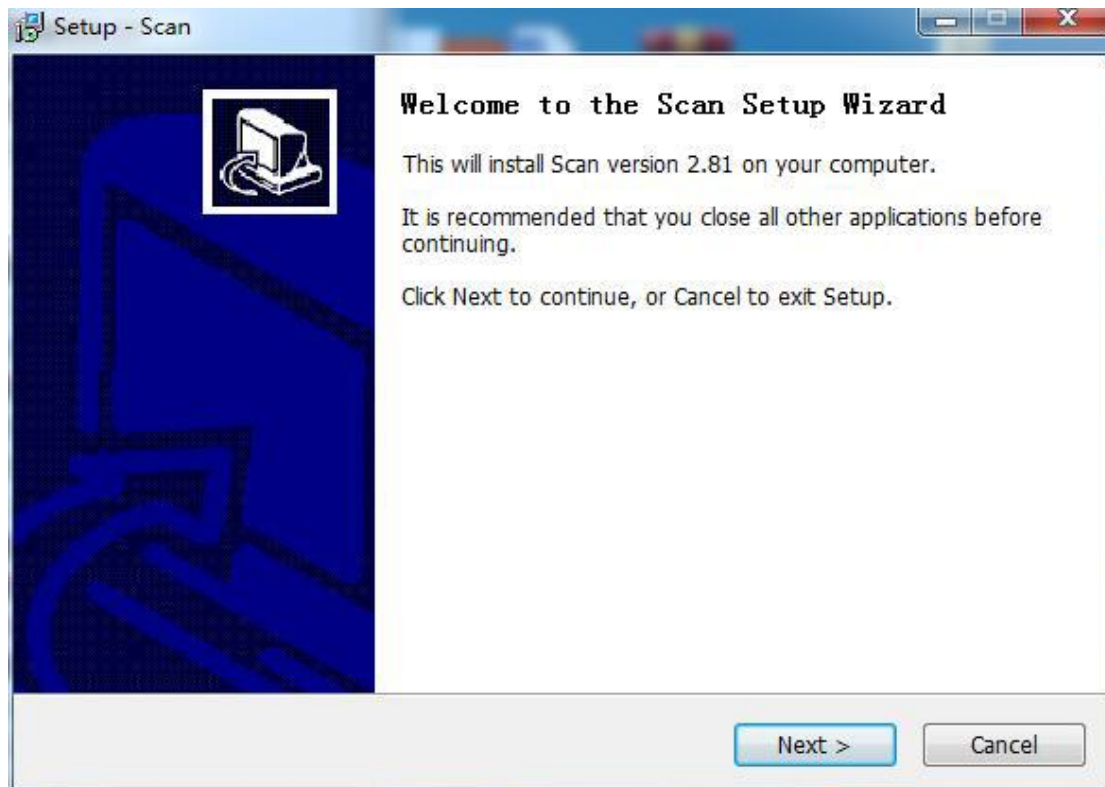
1.2 Software Installation

1) Acquisition method

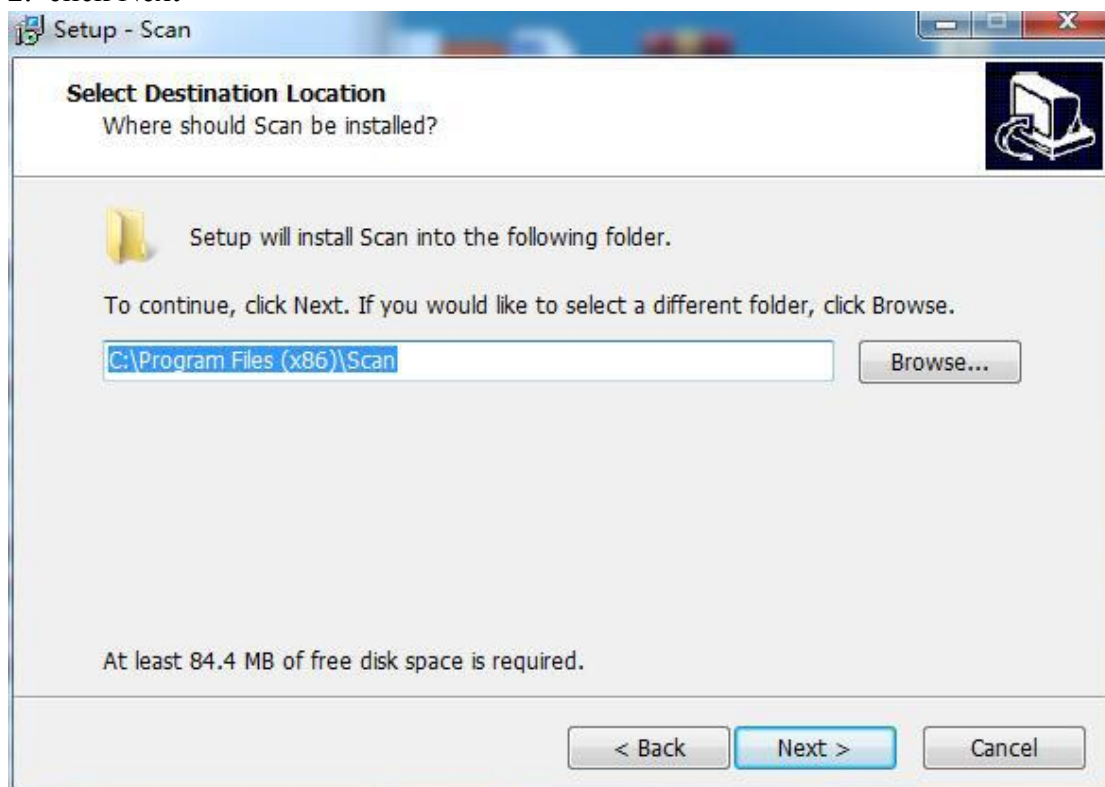
1. Download the corresponding model software from Google Cloud Disk, download address:

2) Installation mode

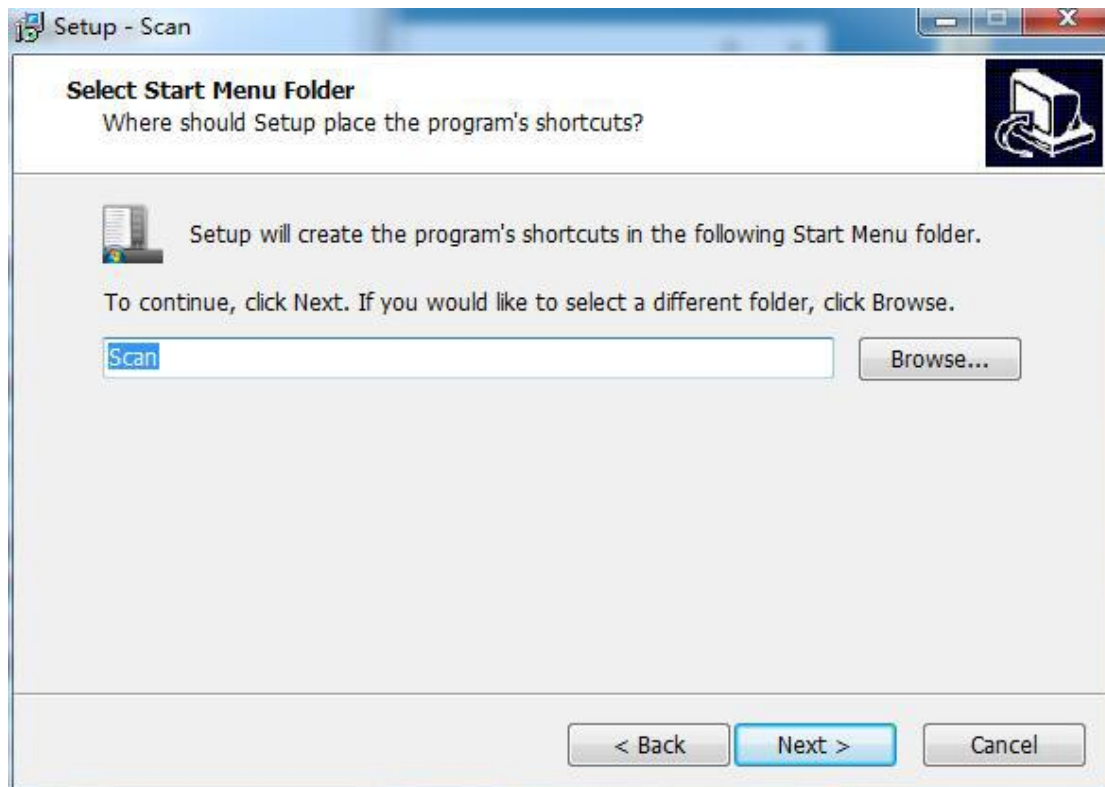
1. Run the setup program of High-Speed Scanner and click Next.



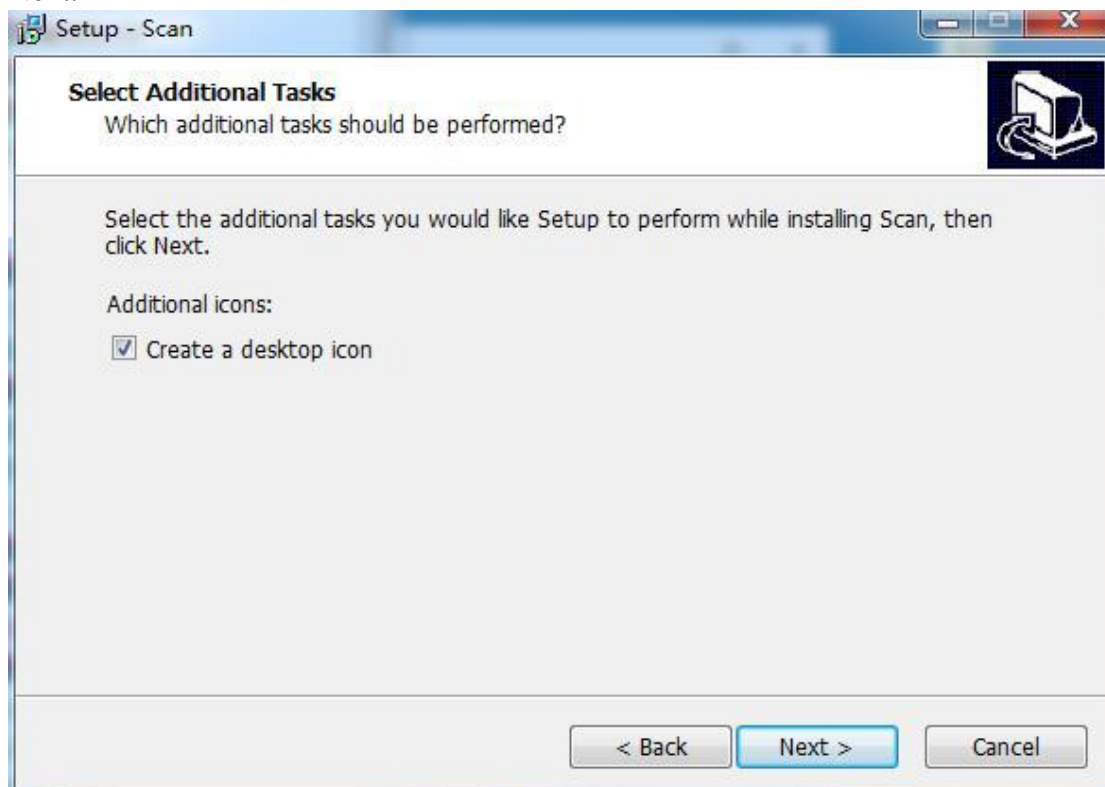
2. click Next



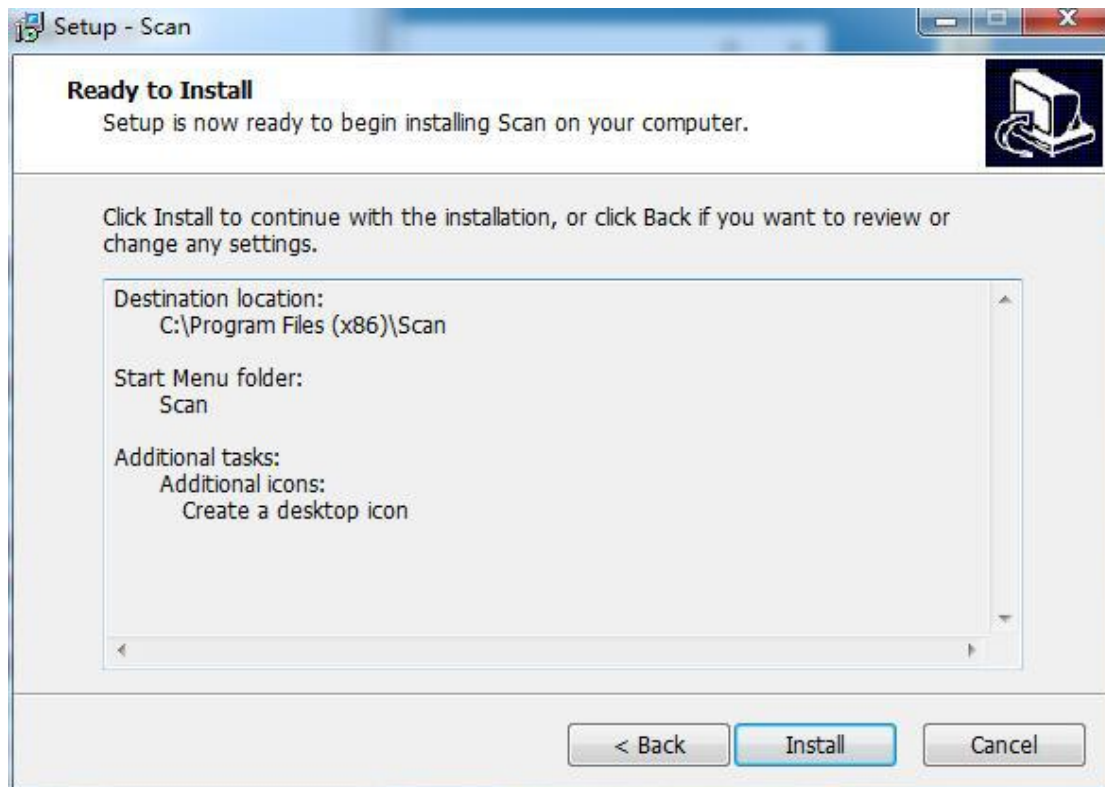
3. Customize or default installation path, then click Next;



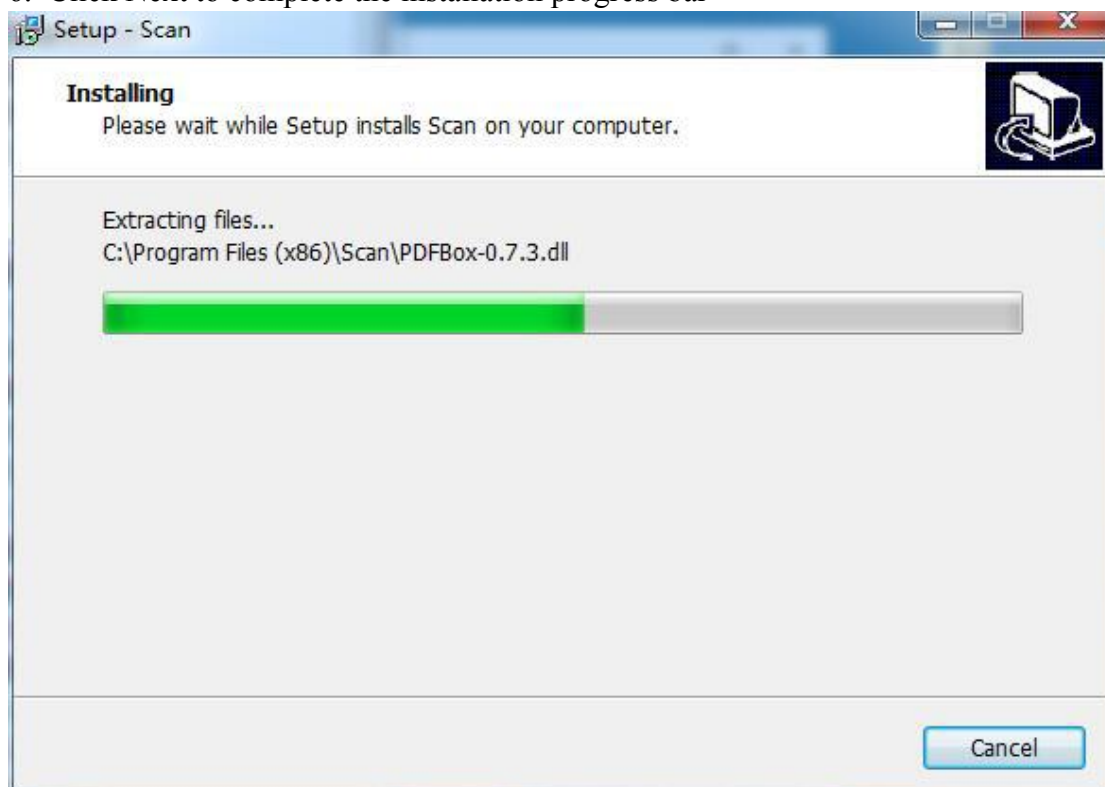
4. Select the program shortcut to create a directory, customize or default, then click Next.



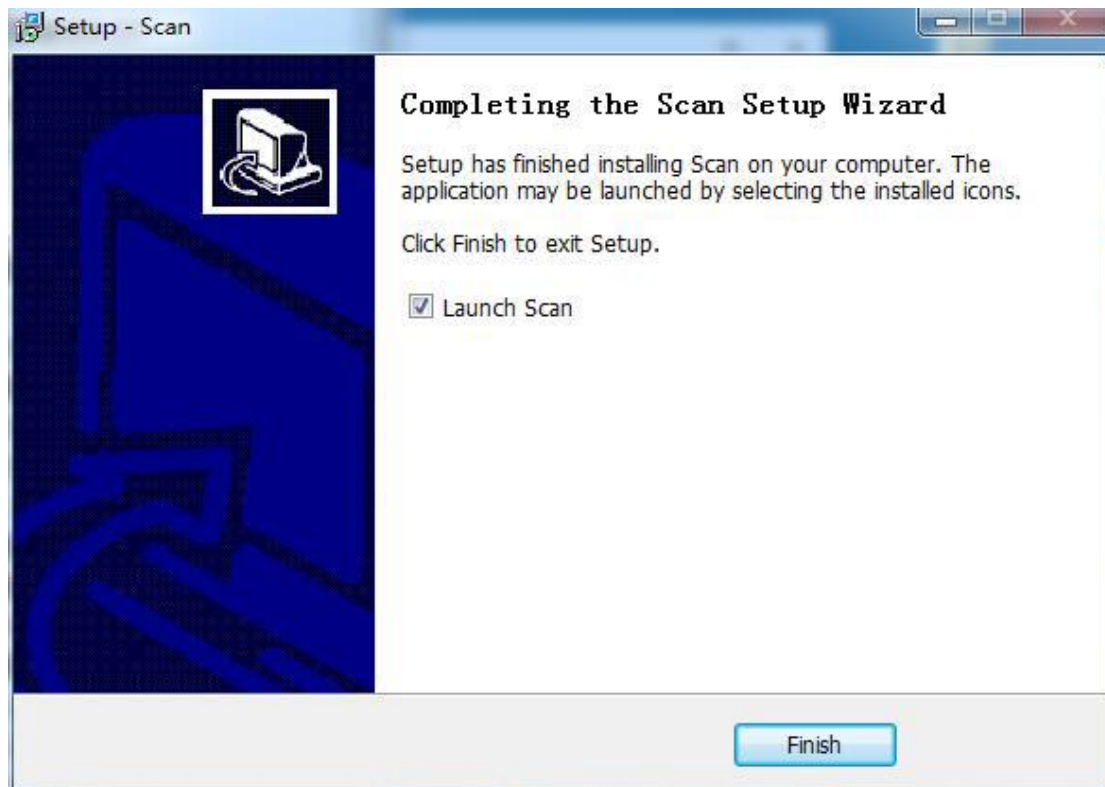
5. Select whether to create a desktop icon, and then click Next.



6. Click Next to complete the installation progress bar

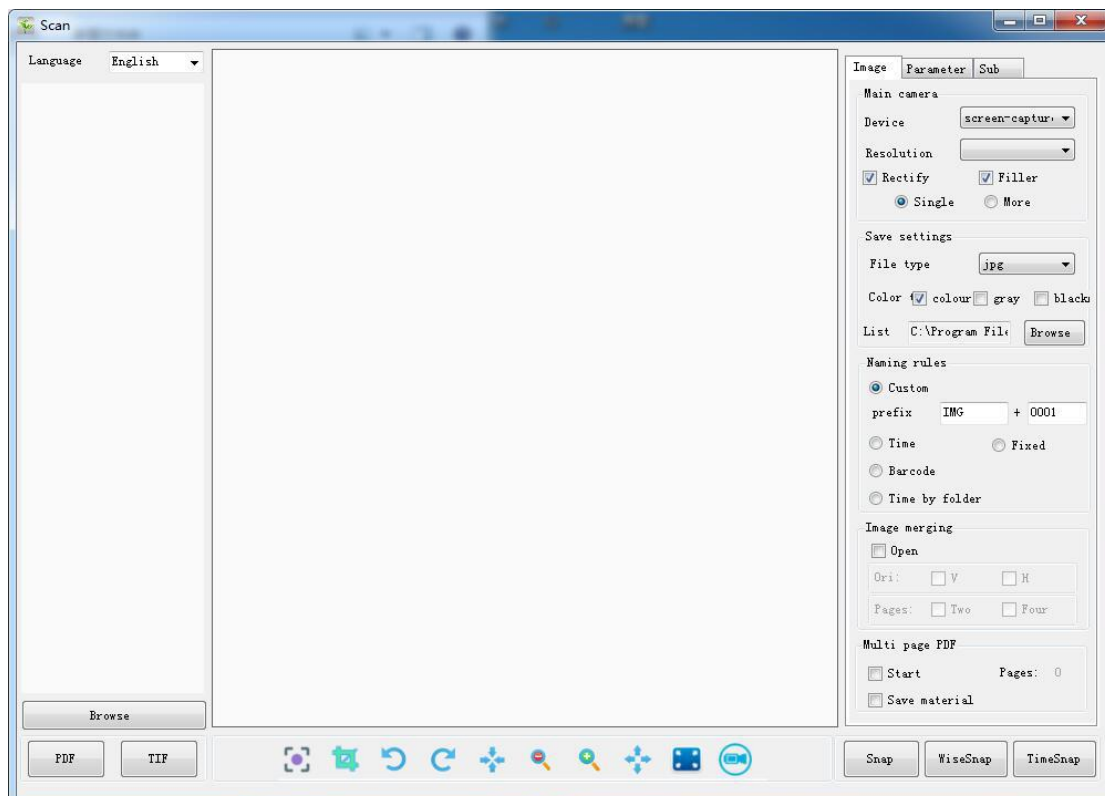


7. Click Finish to complete the whole process



II. Software Instructions

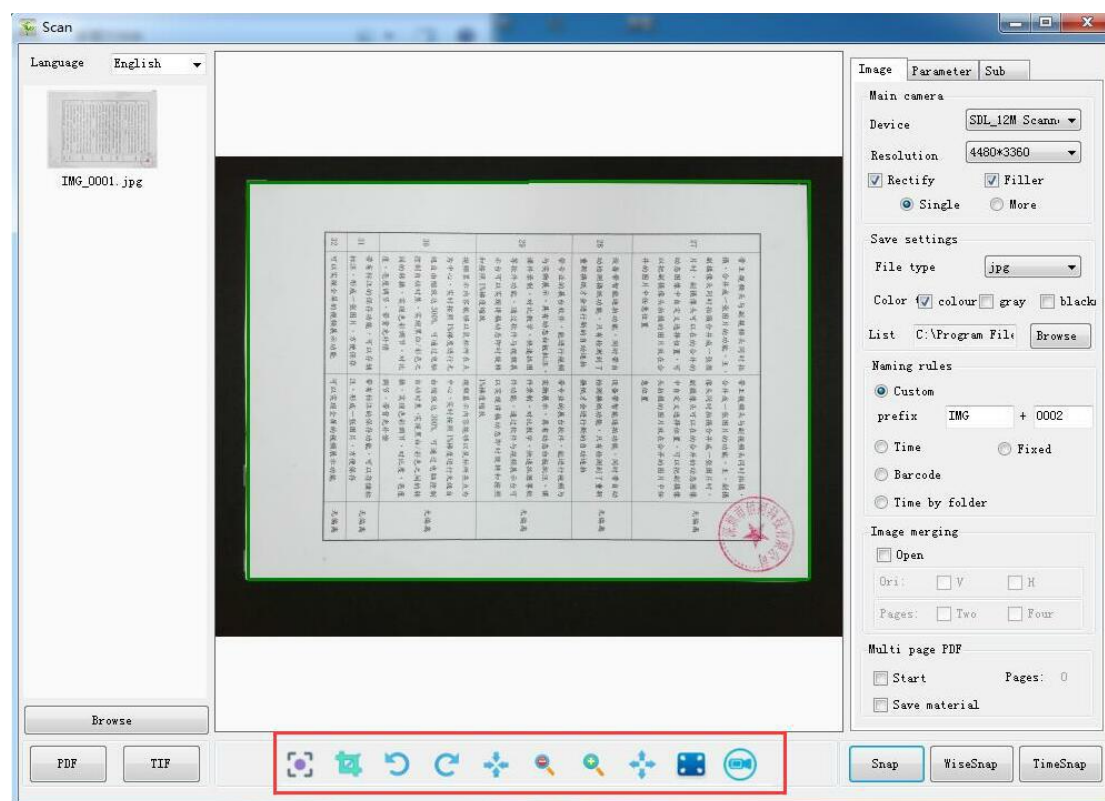
After opening High-Speed Scanner, the interface below pops up:



2.1 Getting Images

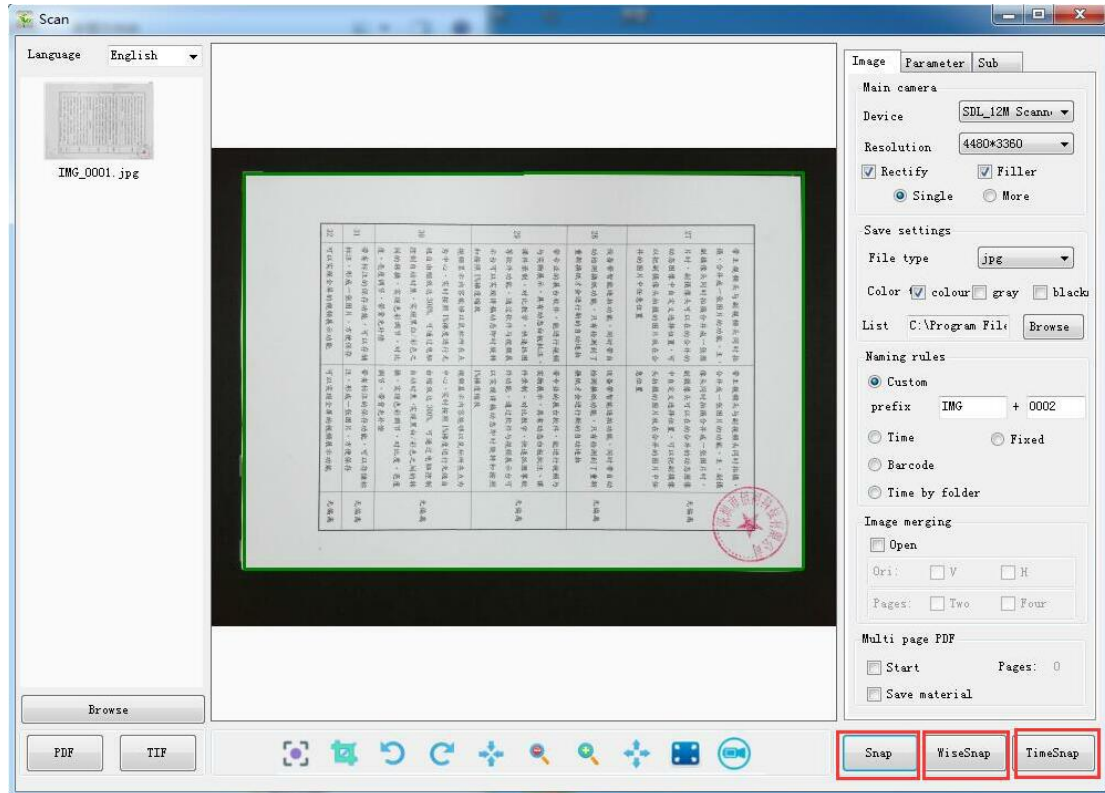
1) Image Preview

When the device is connected to the computer properly, High-Speed Scanner will automatically open the device, acquire real-time images and display them in the image preview area. If there is no image displayed in the image preview area after the device is connected, please check and see if the device runs normally or the device is connected properly.

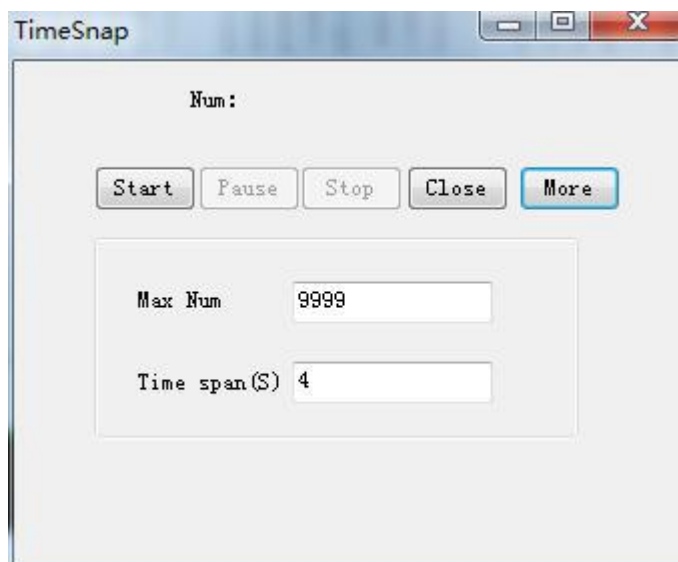
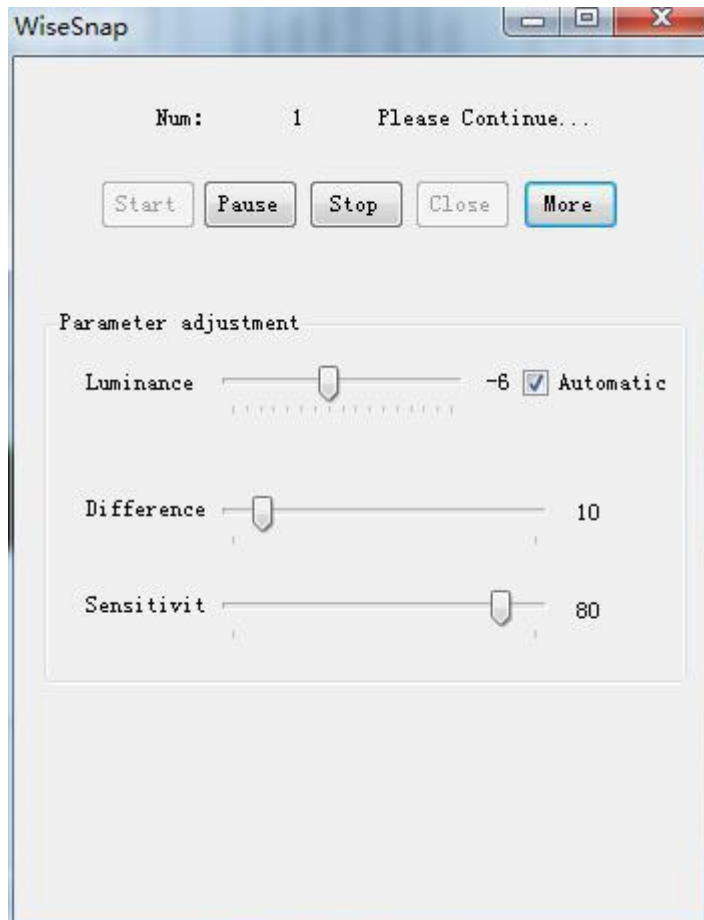


High-Speed Scanner provides real-time preview tools for customers to view real-time images conveniently. Customers can easily rotate the current image clockwise or counterclockwise 90 degrees zoom in and out, 1:1 preview, suitable for size preview, or enter full-screen mode to control the details of each part of the image.

2) Getting images by taking images



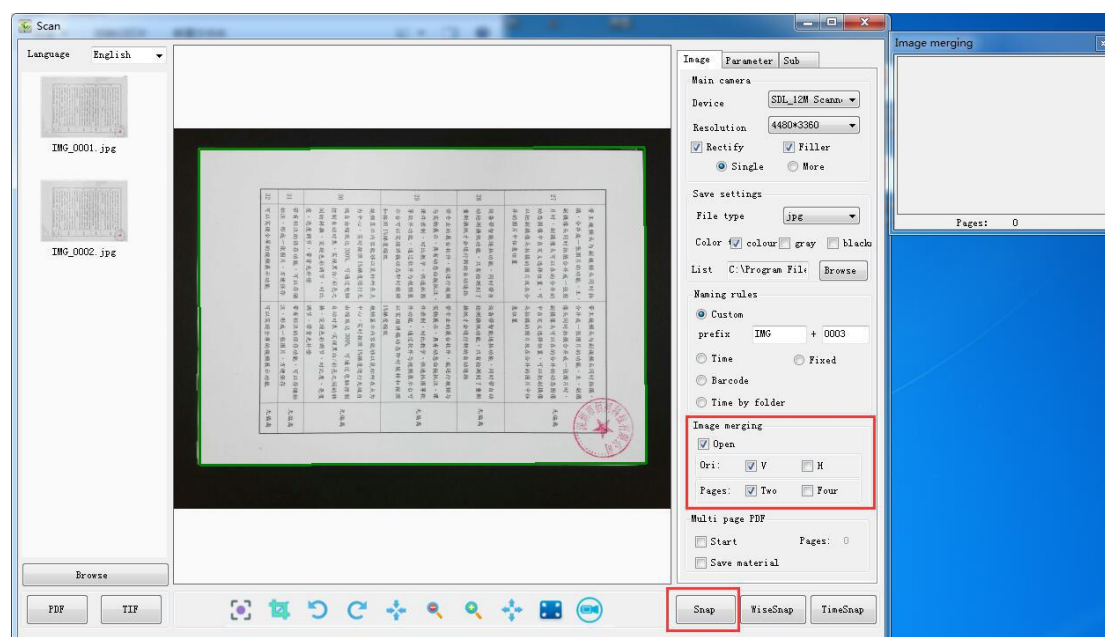
1. Click "Photo" button to get the photo. After the photo is taken successfully, the photo will be displayed on the image list.
2. In order to reduce the repetitive click-and-shoot action, High-Speed Scanner provides the functions of "intelligent continuous shooting" and "timing continuous shooting". By clicking on the "intelligent continuous shooting" or "timing continuous shooting" buttons, High-Speed Scanner will pop up the corresponding dialog box.



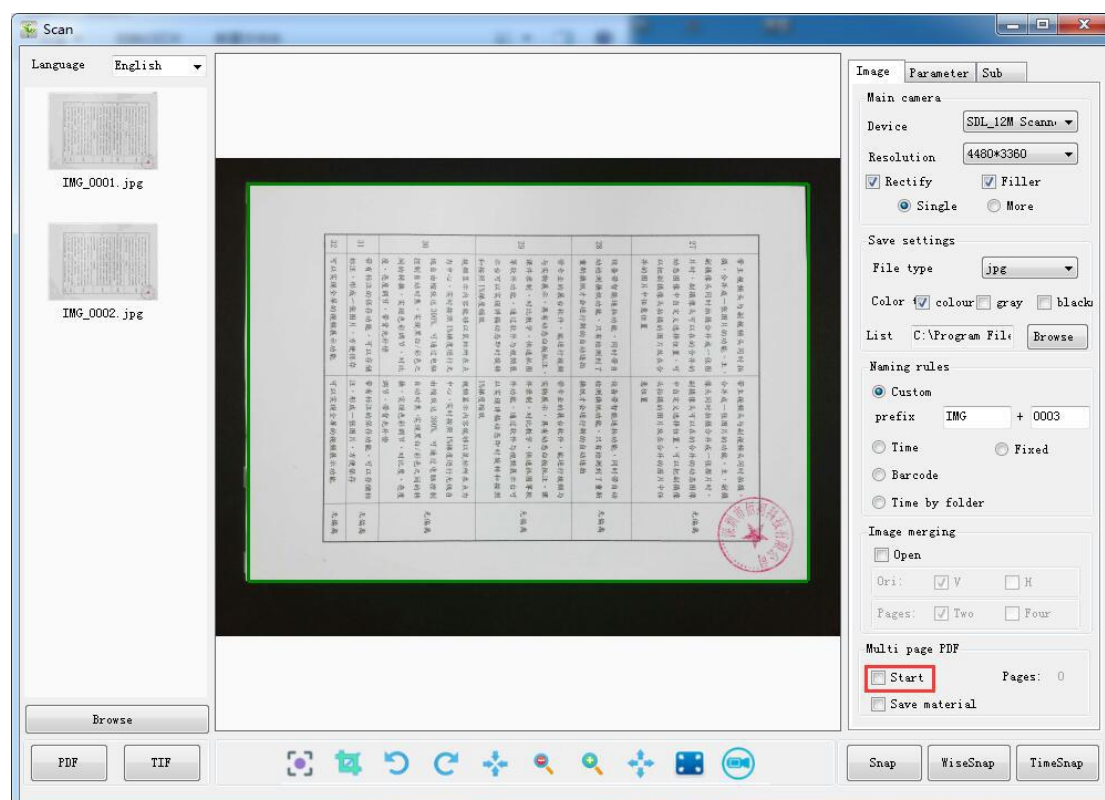
Intelligent continuous shooting realizes automatic photography, which is automatically photographed after sensing the change of paper action, and regular continuous shooting realizes automatic photography at intervals. Similarly, after each photo is successfully taken, the image list displays the photo accordingly.

3. Merge shooting: Check the "image merge" in the Image area, and select the direction (vertical or horizontal) and the number of pages (two or four pages), and

double-click the "merge photo" button or four times to complete the image merge. The list of images will display the merged photos.



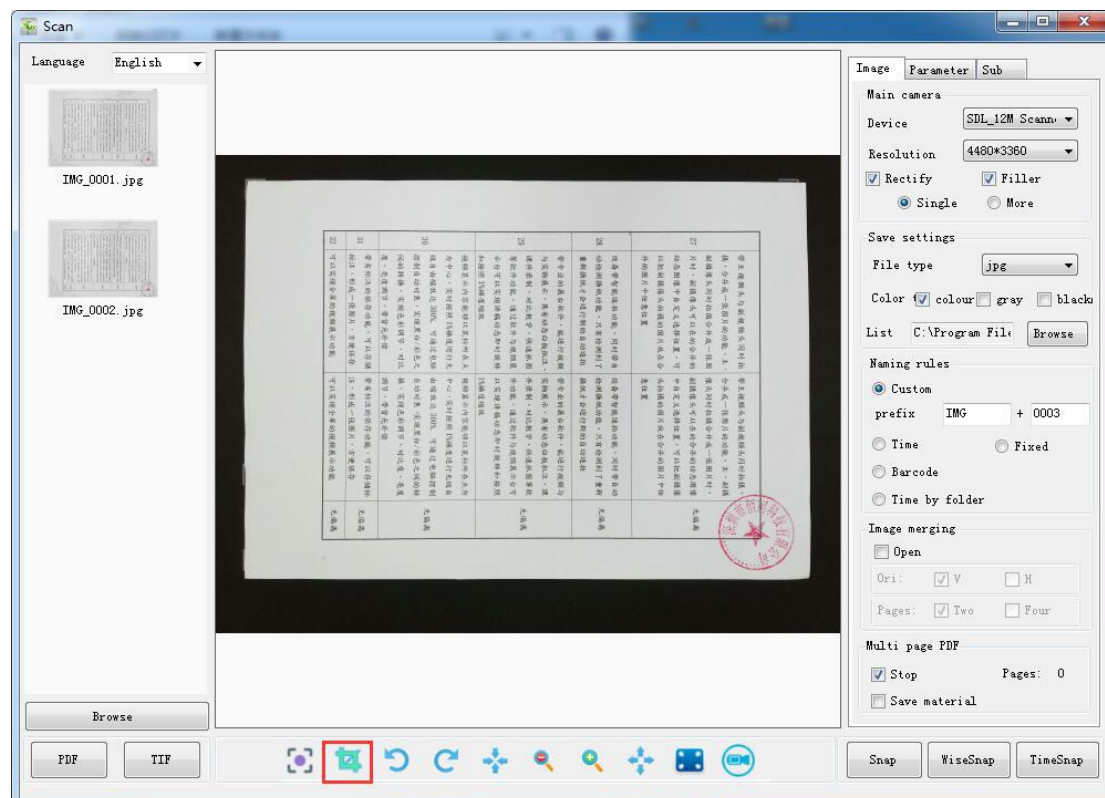
4. Multi-page PDF: Check the Start Multi-page PDF in the Image area, select the files that need to be shot, click the Photography button. Then click Stop Multi-page PDF to finish after all the documents have been photographed. Photos will be displayed on the image list, and then double-click the image to view the generated PDF documents.



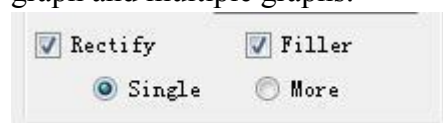
2.2 Image Clipping

Because in most cases, some of the images taken will contain the redundant areas of the underlying part, we provide automatic black edge removal and customized clipping functions.

1. **Customize Clipping:** Click the Clipping button on the toolbar, drag or adjust the size of the Clipping Box in the image preview area, click on the photo to get the clipped image. And click the Clipping button again will cancel the custom clipping.



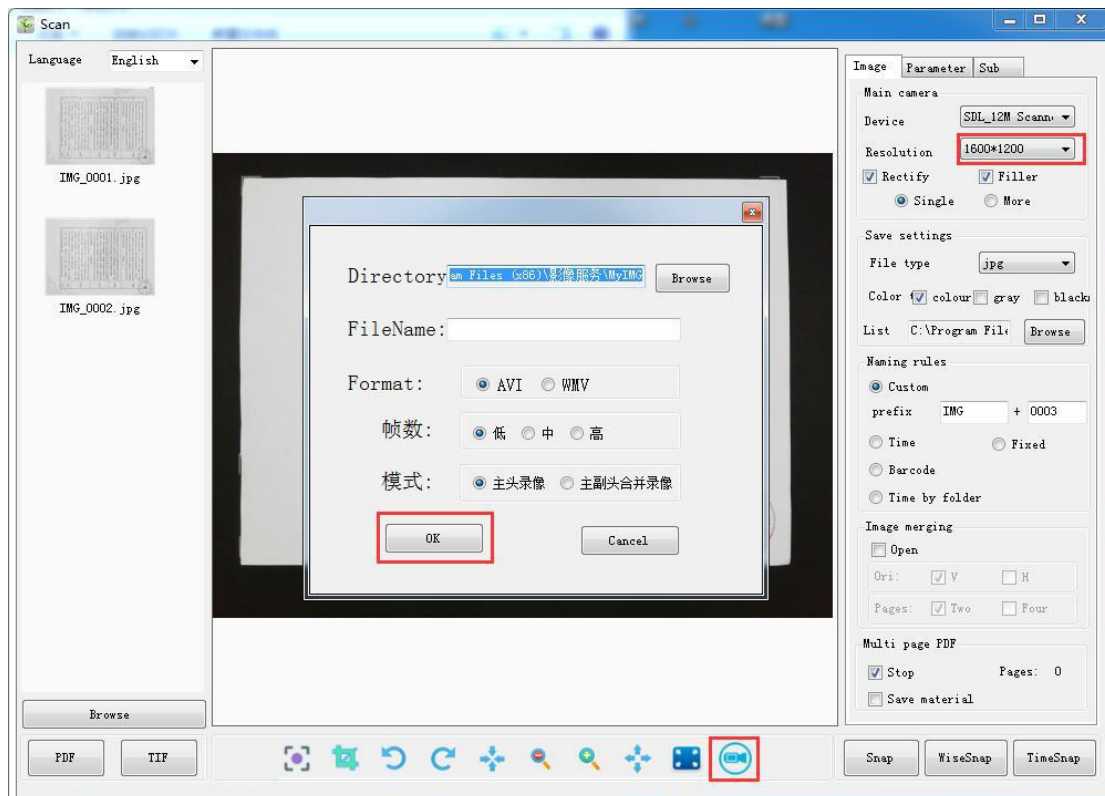
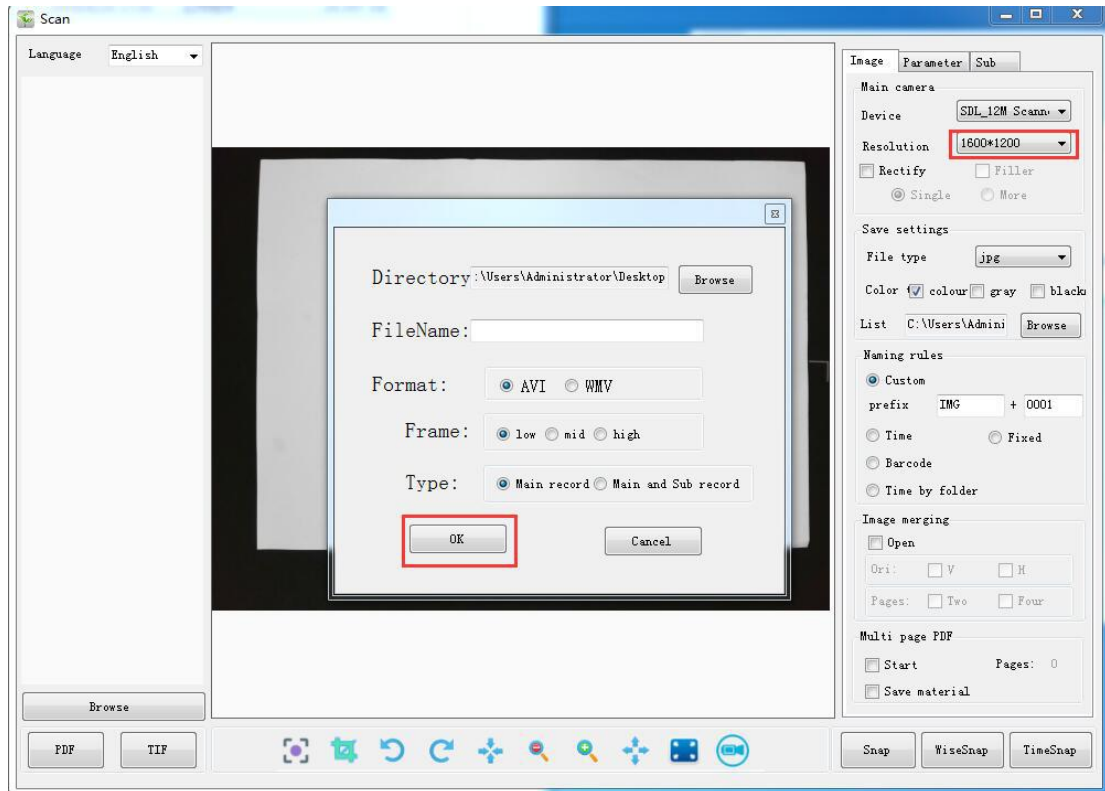
2. **Auto-rectification:** Check the Auto-rectification in Image area (as shown below), which can help users automatically identify black edges and clip them, so as to get cleaner images. It also provides two kinds of automatic rectification modes: single graph and multiple graphs.



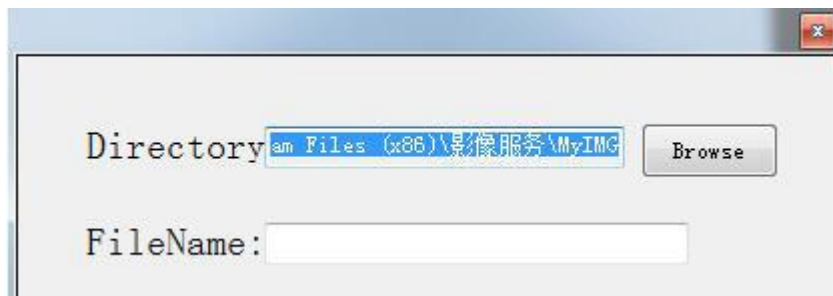
Note: Auto-rectification is only effective for black background backplane. It cannot cut accurately if white backplane is used.

2.3 Video Recording

1. Click on the Image area to narrow resolution less than 1600*1200, and then click on the Video button on the toolbar, High-Speed Scanner will pop up the corresponding dialog box, as shown below.



2. Save Path Settings: Click the Browse button to set the image's save path, and then fill in the file name for easy search.



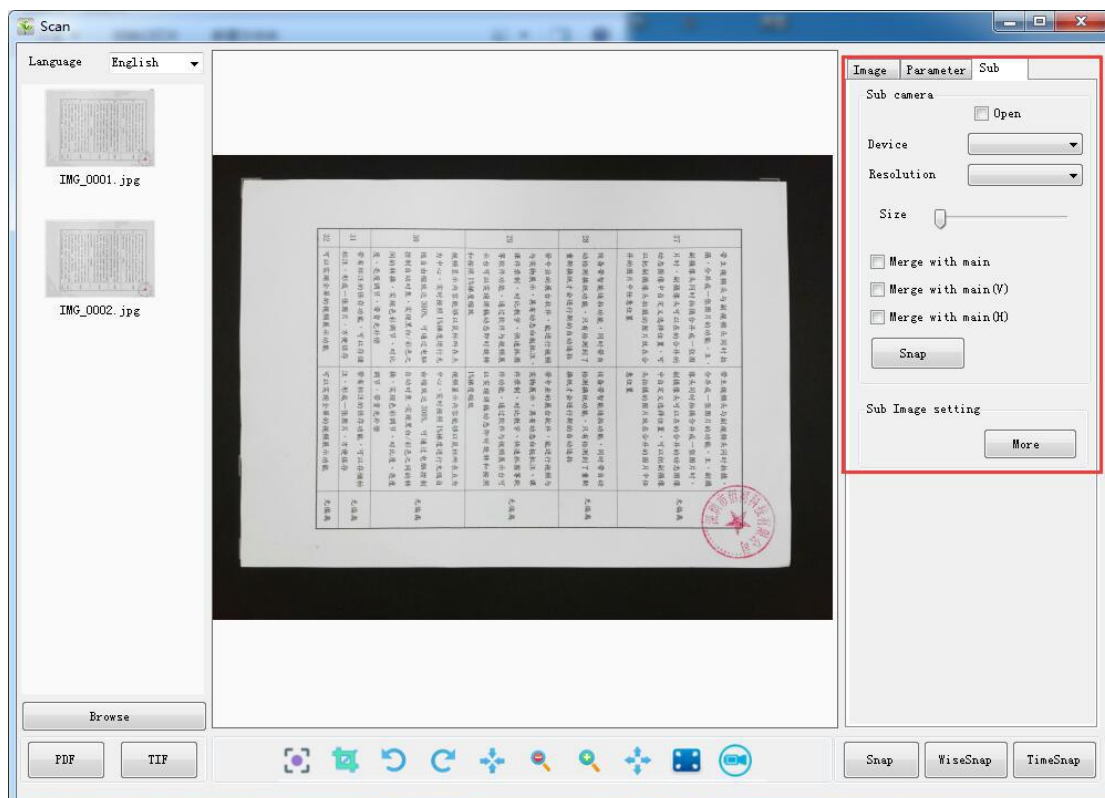
3. Selection of Image Preservation Format



Then click OK button to start recording, and click Video button again after the video is finished.

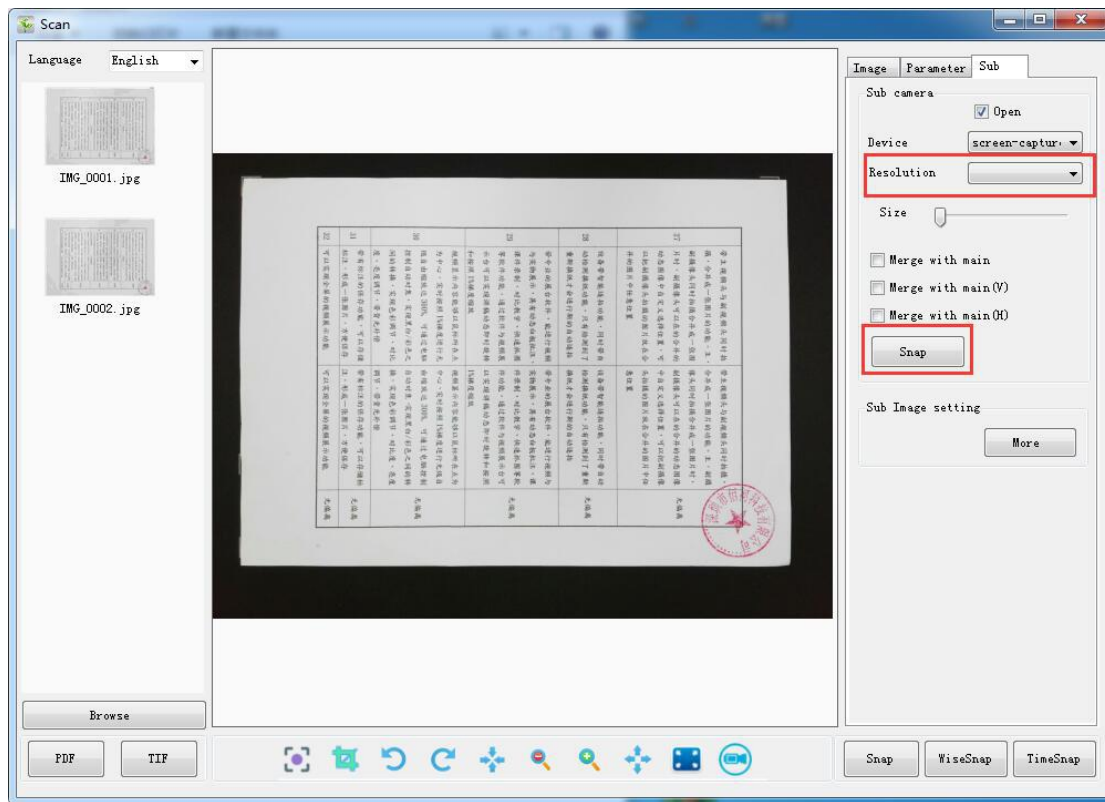
2.4 Multiple equipment and Operation

1. High-Speed Scanner supports connecting multiple machines at the same time. Click on the Sub-head area of the Parameter Setting area, and users can choose which machine to use to get the map, and can also choose a different image resolution.

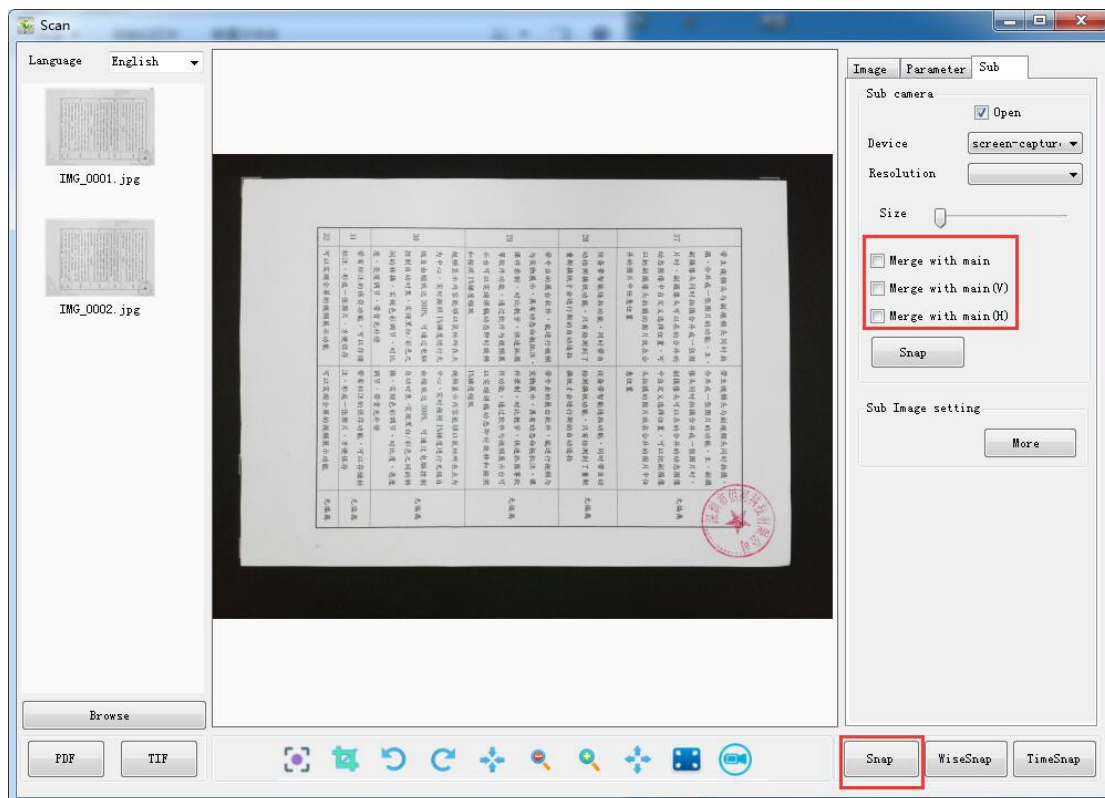


2. Turn on dual devices at the same time: If user's device comes with a secondary device, or users computer connects more than two devices at the same time, High-Speed Scanner can support turning on both devices at the same time. When the

main head is on, click on the Open Video in the Sub-head area to open another device. Click on the Resolution to select the resolution. And click on the Sub-head Photography button to realize the photography function of the Sub-head.



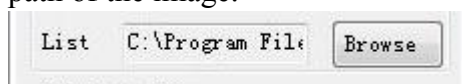
3. Realize the image-in-image function: check the "merge with the main image" or "merge left and right with the main image" or "merge up and down with the main image" in the Sub-head area, and then click the Photography button to realize the merge of the main image and the sub-head image in the image list area.



2.5 Image Save Settings

In the Image area, users can set the Save Settings, Naming Rules, File Type of photos, the Color Type of the image, etc.

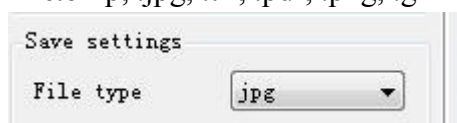
1. Save Settings: As shown in the figure, click the Browse button to set the saving path of the image.



2. Naming Rules Settings: Users can set the corresponding naming methods according to their personal needs.

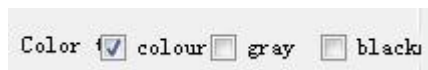


3. File Type Settings: High-Speed Scanner provides formats, like .bmp, .jpg, .tif, .pdf, .png, .gif for image saving.



4. Color Format Settings: High-Speed Scanner provide color, black and white, gray

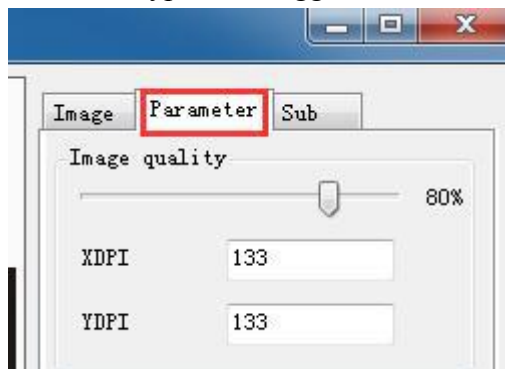
three color format selections.



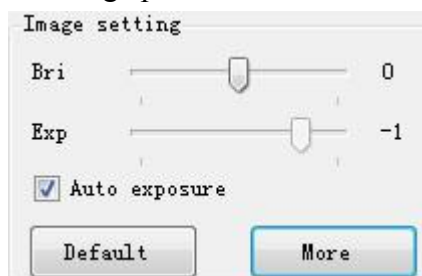
2.6 Parameter Setting

In the Parameter Setting area, users can set image quality, video parameters, image watermark, document printing, etc. High-Speed Scanner can also identify two-dimensional codes and second-generation identity cards.

1. Image quality settings: Image quality settings are only applicable to images saved in PG file type. The bigger the value, the better the quality.

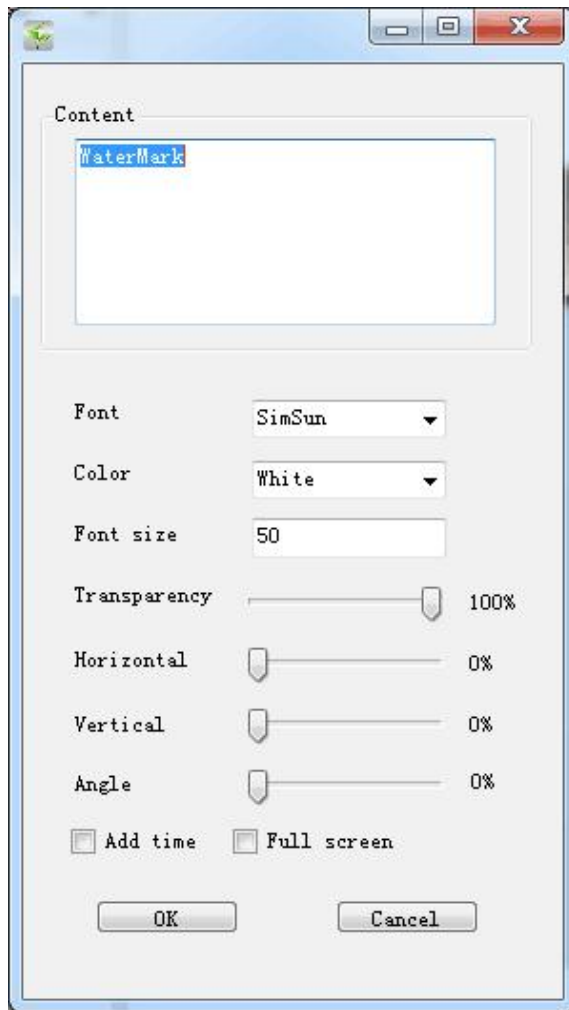


2. Video parameter setting: when users set the brightness, exposure and other parameters of the video, they can see the effect of adjusting the video parameters in the image preview area in real time.

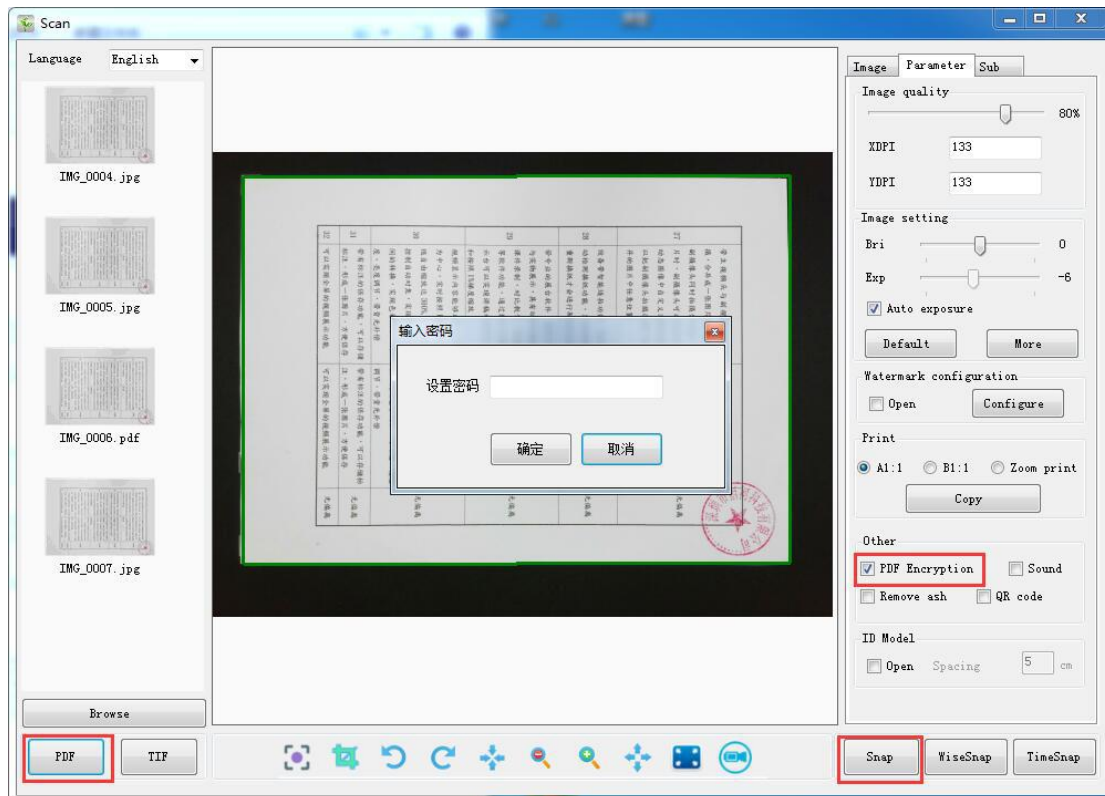


3. Watermark Settings: High-Speed Scanner provides the function of adding a watermark. After checking the function of watermarking, the images taken will add watermark. The details of watermark can be set in detail in the watermark dialog box that pops up by clicking the Configuring Watermark button.

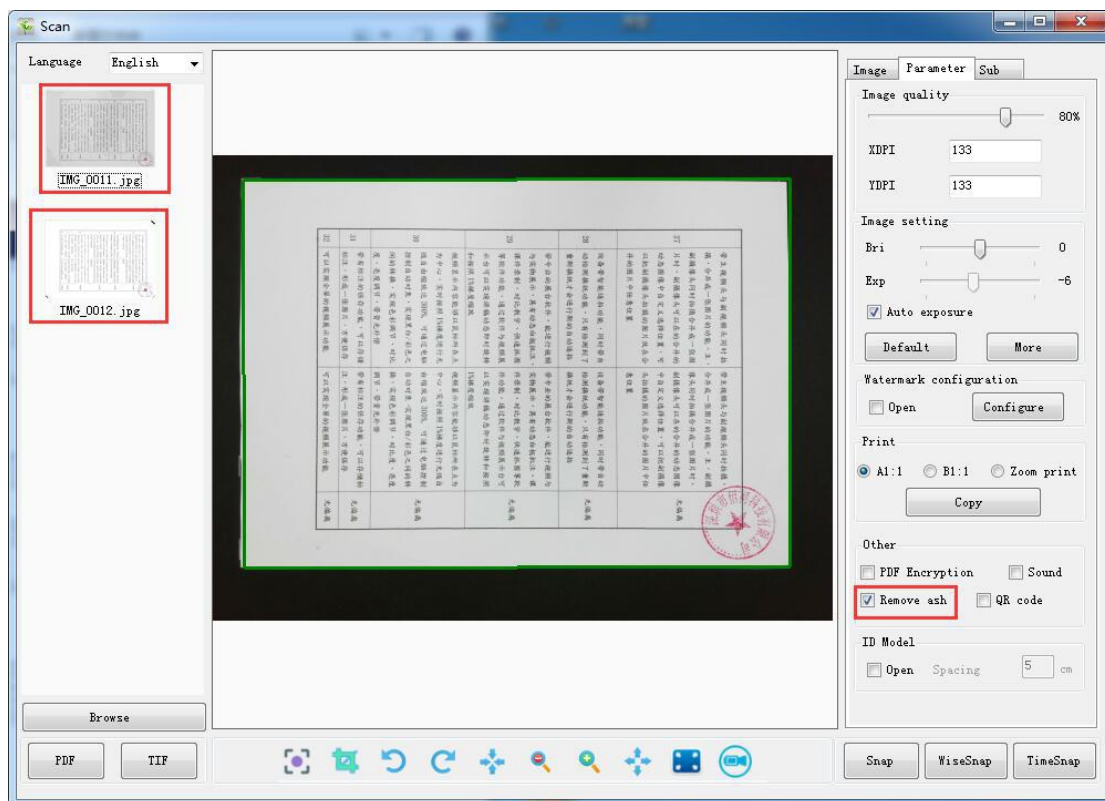




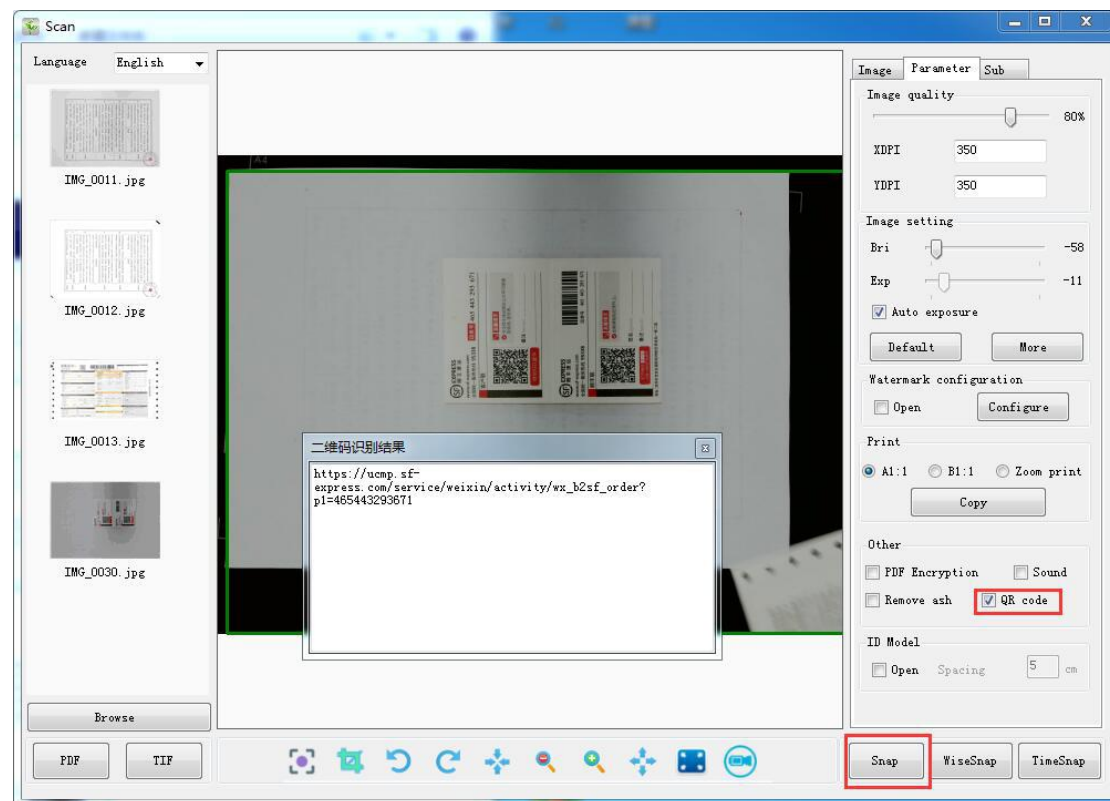
4. PDF Encryption: Check the PDF Encryption function of other settings in the Parameter Settings area, and then click the Photography button. When the photo is taken successfully, the photo will be displayed on the image list. Then click the image that needs to be encrypted, and then click the Merge PDF button, High-Speed Scanner will pop up the corresponding dialog box and set the password to click to determine. As shown in the following figure.



5. Remove the background color function: Check the Remove the background color function of other settings in the Parameter Settings area, and then click the Photography button. When the photo is taken successfully, the photo will be displayed on the image list. As shown in the following figure.

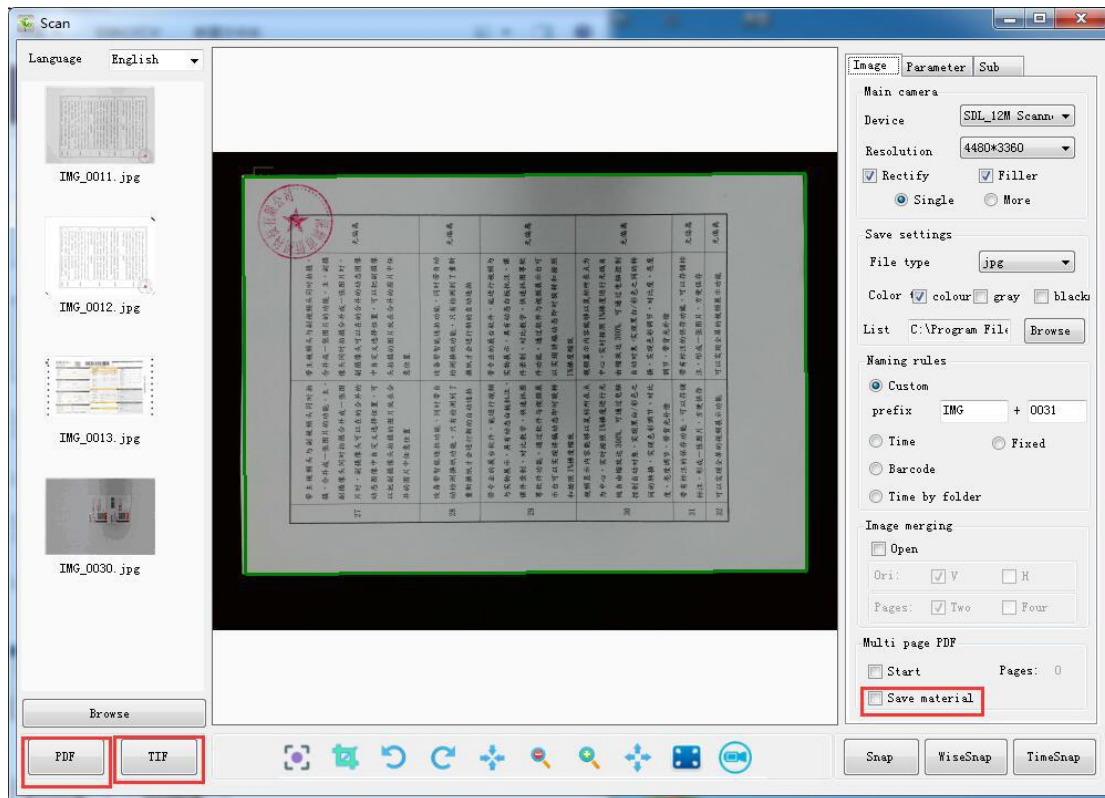


6. Identify two-dimensional code: Check the Identify two-dimensional code function of other settings in the Parameter Settings area, and then click the Photography button. As shown in the following figure.

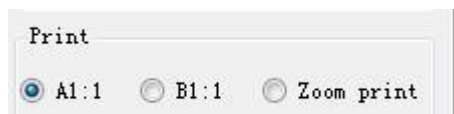


2.7 Document Merging and Printing Function

7. 1. Document merging: High-Speed Scanner provides the function of merging images into PDF and TIF. After selecting the images that need to be merged in the image list, click the Merge PDF or Merge TIF button to complete the merging function. Before merging PDF, users can also set whether to retain the merged material in the Image area. As shown in the following figure.



2. Document Printing: Click on the Print button in the Parameter Settings area to print the image with one button. Printing mode can also be set before printing.



In addition, printing function can also be achieved in this way: select the print image in the image list, right-click the mouse, select Print in the pop-up menu.

3. Common Problems and Solutions

A) How to achieve better auto-clipping?

In order to get better automatic edge clipping effect, the background and the object must have some color difference when shooting. It is recommended to use a black background to shoot documents.

B) The collected images occupy a large amount of disk space. How to operate them to reduce the amount of disk space occupied by images?

1. Click Parameter Settings to adjust the image quality. The lower the image quality of JPG, the smaller the disk space occupied by the generated image.
2. Click on Image to adjust image resolution
3. Use clipping function
4. Combine the above operations

C) Can't find the device?

1. The device is not connected. Please connect the device.
2. The device is connected, but this still happens. The reason may be that the device has been occupied by other processes and needs to shut down other video software or USB ports. If there are still problems, try to change the USB port and open High-Speed Scanner again.

D) Device connection but software video preview area cannot be imaged?

Software can be turned on to show that the hardware has been identified and connected. First, make sure that the light on the camera is on (blue light). If it is not on, the camera is damaged. If it is on, the reason is that there is no video data stream transmission. The following methods can be used to try to solve the problem:

1. Connect the camera with another USB port
2. Change a data line to connect the camera and USB
3. Update System USB Driver
4. Display Color Quality Guaranteed at 32 Bits

E) What about the yellow question mark and exclamation mark appearing in the image processing equipment in the device manager?

Please repeatedly plug in and unplug the USB port or restart the computer.

Disclaimer:

We will try our best to provide comprehensive and accurate information, but we will not be responsible for any errors or omissions that may occur in the information provided. Images are for reference only. The relevant configuration and product supply are subject to change at any time without prior notice.